

City of Portland
Health & Human Services Department
Social Services Division

PORTLAND HOMELESS SHELTERS

Total Number of Individuals Residing in Shelters per Night:

	October 2013	October 2014
ADOLESCENTS	23 Individuals	23 Individuals
FAMILIES	160 Individuals 49 Average Families	165 Individuals 57 Average Families
ADULTS	302 Individuals	290 Individuals
Total	485 Individuals	478 Individuals

31 Days in the Month of October

This information is also posted on the City of Portland's website each month.
To view this information, please go to
<http://www.portlandmaine.gov/537/Emergency-Shelter-Assessment-Committee>

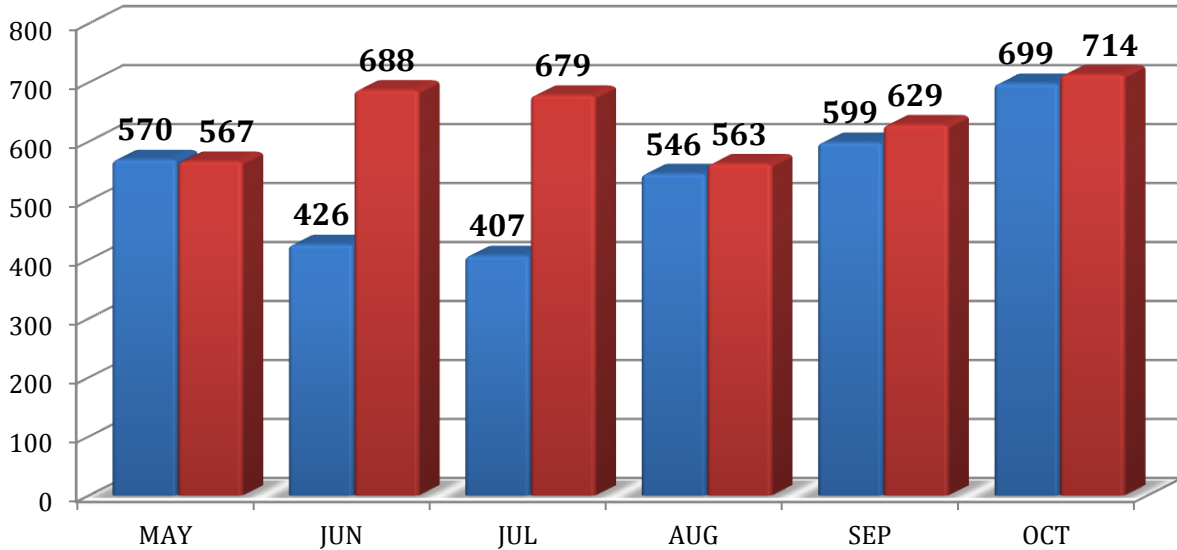
Prepared by:
City of Portland
Health & Human Services Department
Social Services Division

PREBLE STREET JOE KREISLER TEEN SHELTER

OCTOBER 2014

ADOLESCENT BEDS USED

■ 2013 ■ 2014



	May	Jun	Jul	Aug	Sep	Oct
2013	570	426	407	546	599	699
2014	567	688	679	563	629	714
Percent	-0.5%	+62%	+66%	+3%	+5%	+2%

PREBLE STREET Joe Kreisler Teen Shelter

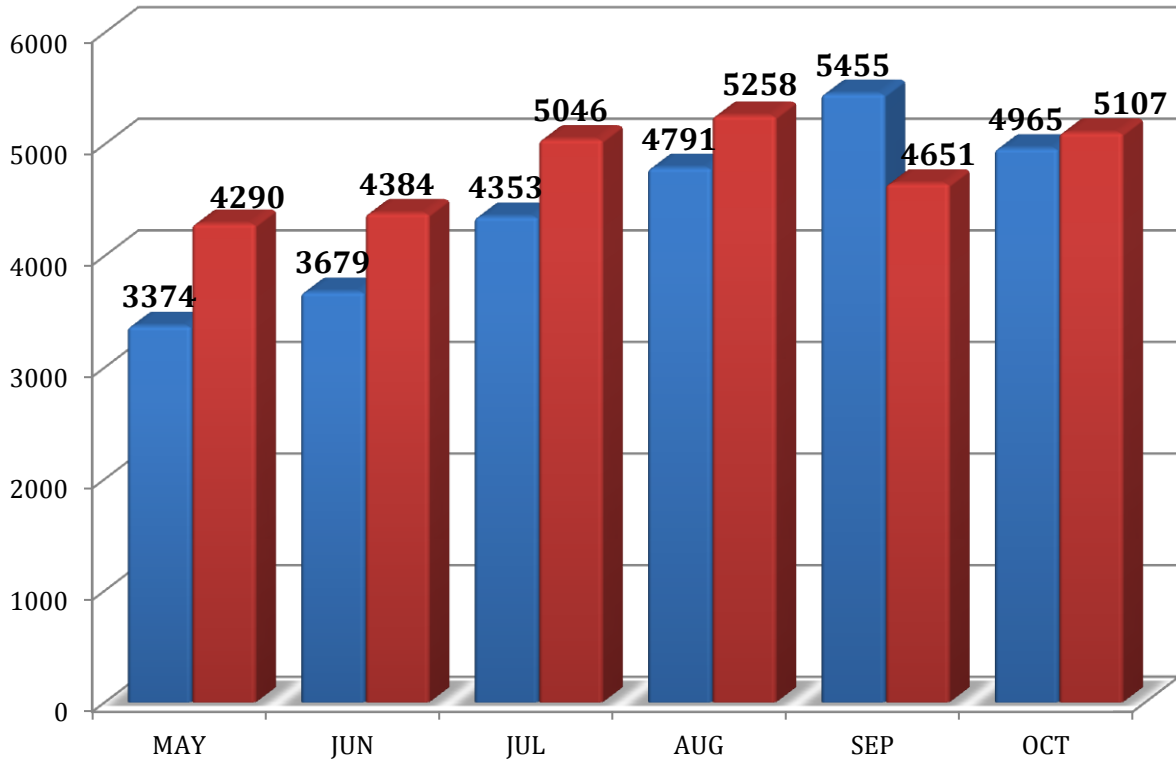
24 Beds

Capacity	24
Month Total	714
Avg/Night	23
Highest Night	24
Lowest Night	19

UNDUPLICATED YOUTH:	63
TOTAL NEW INTAKES:	18
TOTAL HOUSING PLACEMENTS:	0
• TH PLACEMENTS	0
• PH PLACEMENTS	0
TOTAL RETURNS:	2
*EXPERIENCING HOMELESSNESS FOR THE 1ST TIME	11
(*BASED ON SELF-REPORTING)	
TOTAL YOUTH TURNED AWAY DUE TO REACHING CAPACITY	39

**PORTLAND, CITY-WIDE
OCTOBER 2014
FAMILY BEDS USED**

■ 2013 ■ 2014



	May	Jun	Jul	Aug	Sep	Oct
2013	3374	3679	4353	4791	5455	4965
2014	4290	4384	5046	5258	4651	5107
Percent	+27%	+19%	+14%	+10%	-15%	+3%

**FAMILY SHELTER
Hotels- Overflow**

**94 Beds
As-Needed**

FAMILY CRISIS SHELTER

16 Beds

STEPPING STONES

12 Beds

PORTLAND, CITY-WIDE
OCTOBER 2014
FAMILY SHELTER STATISTICS

	<i>Families- City* (incl. overflow)</i>	City	GA Hotels	Family Crisis	Stepping Stones	Beds Used Per Night
Capacity	24	94		16	12	122+
Month Total	1206	2889	1228	491	499	5107
Avg/Night	39	93	40	16	16	165
Highest Night	43	107	56	16	19	180
Lowest Night	36	82	12	14	8	151

CITY OF PORTLAND FAMILY SHELTER	FAMILIES	INDIVIDUALS
UNDUPLICATED FAMILIES/INDIVIDUALS:	70	234
TOTAL NEW INTAKES:	29	91
TOTAL HOUSING PLACEMENTS:	20	72
• TH PLACEMENTS	0	0
• PH PLACEMENTS	20	72
TOTAL RETURNS:	0	0
*EXPERIENCING HOMELESSNESS FOR THE 1ST TIME (*BASED ON SELF-REPORTING)	13	42

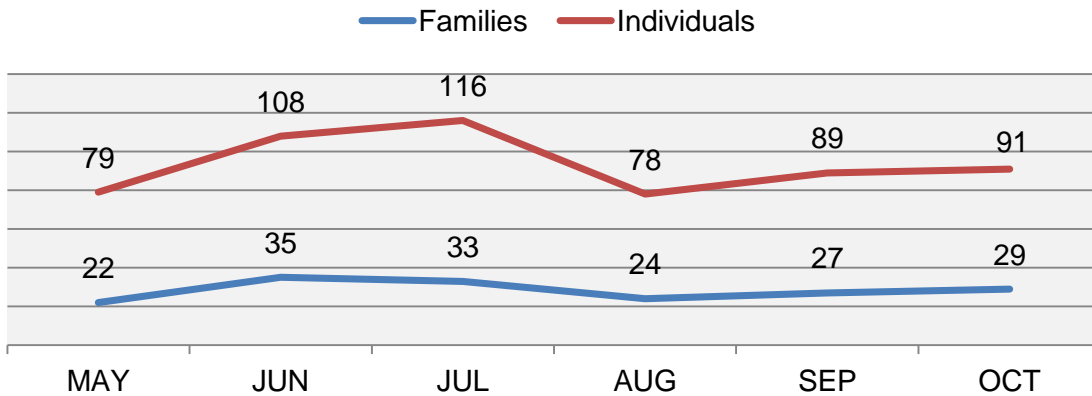
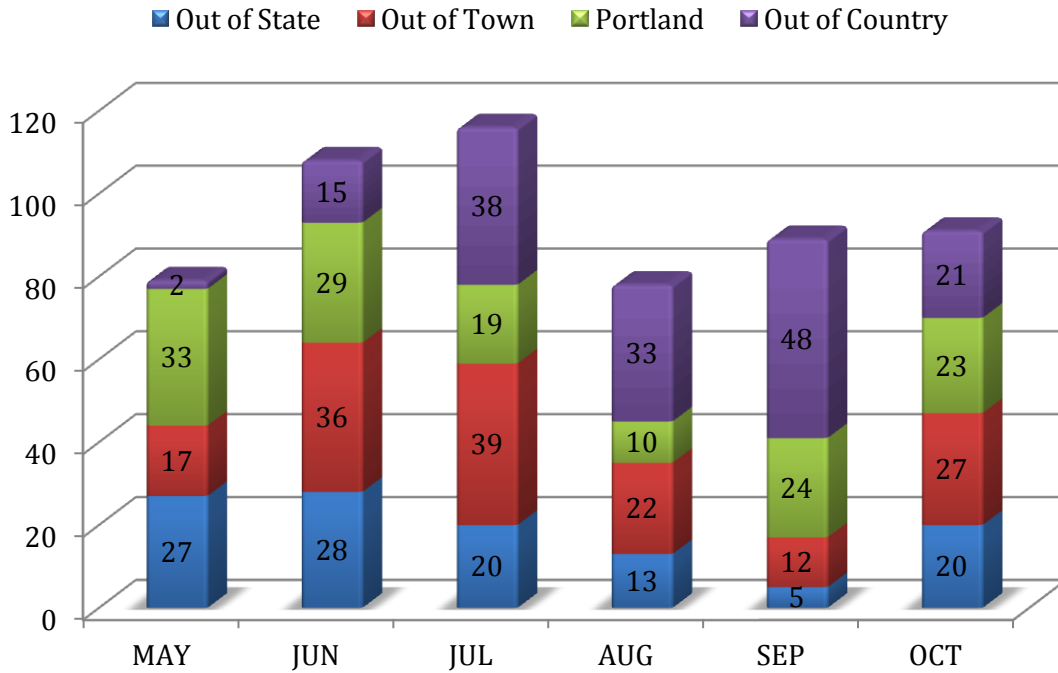
FAMILY CRISIS	FAMILIES	INDIVIDUALS
UNDUPLICATED FAMILIES/INDIVIDUALS:	14	19
TOTAL NEW INTAKES:	3	3
TOTAL HOUSING PLACEMENTS:	2	3
• TH PLACEMENTS	2	3
• PH PLACEMENTS	0	0
TOTAL RETURNS:	0	0
*EXPERIENCING HOMELESSNESS FOR THE 1ST TIME (*BASED ON SELF-REPORTING)	0	0

STEPPING STONES	FAMILIES	INDIVIDUALS
UNDUPLICATED FAMILIES/INDIVIDUALS:	9	23
TOTAL NEW INTAKES:	2	4
TOTAL HOUSING PLACEMENTS:	2	5
• TH PLACEMENTS	1	2
• PH PLACEMENTS	1	3
TOTAL RETURNS:	0	0
*EXPERIENCING HOMELESSNESS FOR THE 1ST TIME (*BASED ON SELF-REPORTING)	0	0

CITY OF PORTLAND
 HEALTH & HUMAN SERVICES DEPARTMENT
 SOCIAL SERVICES DIVISION

FAMILY SHELTER
 OCTOBER 2014
 INTAKE STATISTICS

Total Number of Individuals



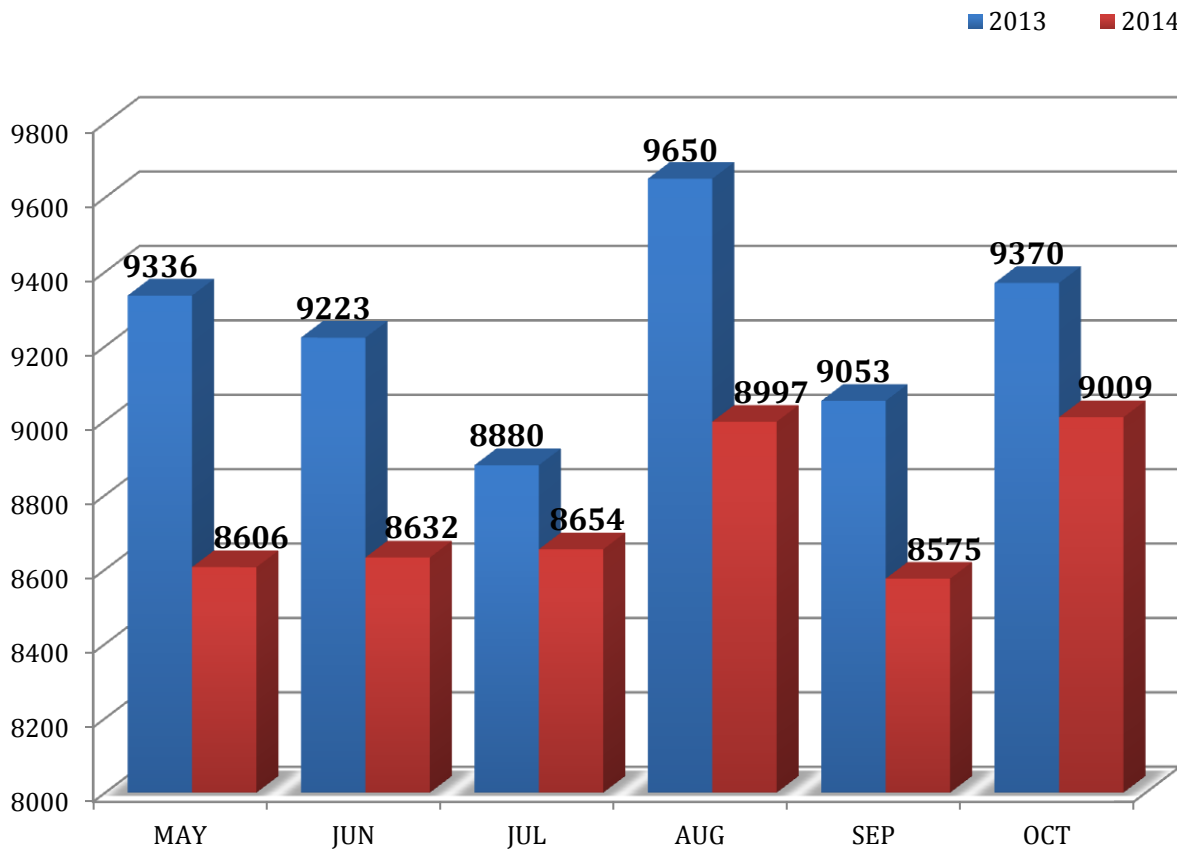
Intake statistic or new arrival is defined as an individual that has not stayed at the Shelter for a period of three (3) months/90-days or longer.

CITY OF PORTLAND
HEALTH & HUMAN SERVICES DEPARTMENT
SOCIAL SERVICES DIVISION

FAMILY SHELTER
OCTOBER 2014

MAINE TOWN		OUT-OF-STATE		OUT-OF-COUNTRY	
Gorham	3	Connecticut	3	Angola	9
Lewiston	4	Georgia	5	Burundi	2
Saco	3	Maryland	2	Congo	2
South Portland	6	Minnesota	3	Iraq	3
Standish	3	New York	3	Rwanda	5
Westbrook	2	Washington	4		
Windham	6				
				Out-of-Country	21
Maine Towns	27	Out-of-State	20	Portland Intakes	23
				<u>TOTAL INTAKES</u>	<u>91</u>

PORTLAND, CITY-WIDE OCTOBER 2014 ADULT SHELTER STATISTICS



	May	Jun	Jul	Aug	Sep	Oct
2013	9336	9223	8880	9650	9053	9370
2014	8606	8632	8654	8997	8575	9009
Percent	-8%	-6%	-3%	-7%	-5%	-4%

MILESTONE FOUNDATION

Substance Abuse Shelter 41 Beds

HEALTH & HUMAN SERVICES DEPARTMENT—SOCIAL SERVICES DIVISION

Oxford Street Shelter 141 Beds

FLORENCE HOUSE

Women's Shelter 25 Beds

Safe Haven 13 Beds

COMMUNITY OVERFLOW

Preble Street Resource Center 75 Beds

GA Overflow 17 Beds

**PORTLAND, CITY-WIDE
OCTOBER 2014
ADULT SHELTER STATISTICS**

	OSS		PS Overflow	GA Overflow	Warming Ctr- Chair Only		PS Women's Shelter	Milestone	Beds Used Per Night
	Men	Women			Men	Women			
Capacity	63	44	75	17			26	41	453
Month Total	2767	1557	2390	0	137	0	810	1348	9009
Avg/Night	89	50	77	0	4	0	26	43	290
Highest Night	112	59	83	0	36	0	27	49	321
Lowest Night	73	41	72	0	0	0	25	41	256

MILESTONE

UNDUPLICATED INDIVIDUALS:	157
TOTAL NEW INTAKES:	16
TOTAL RETURNS:	0
*EXPERIENCING HOMELESSNESS FOR THE 1ST TIME	2
<small>(*BASED ON SELF-REPORTING)</small>	

OXFORD STREET SHELTER & COMMUNITY OVERFLOW (MEN)

UNDUPLICATED INDIVIDUALS:	425
TOTAL NEW INTAKES:	125
TOTAL HOUSING PLACEMENTS:	18
• TH PLACEMENTS	1
• PH PLACEMENTS	17
TOTAL RETURNS:	1
*EXPERIENCING HOMELESSNESS FOR THE 1ST TIME	22
<small>(*BASED ON SELF-REPORTING)</small>	

OXFORD STREET SHELTER & COMMUNITY OVERFLOW (WOMEN)

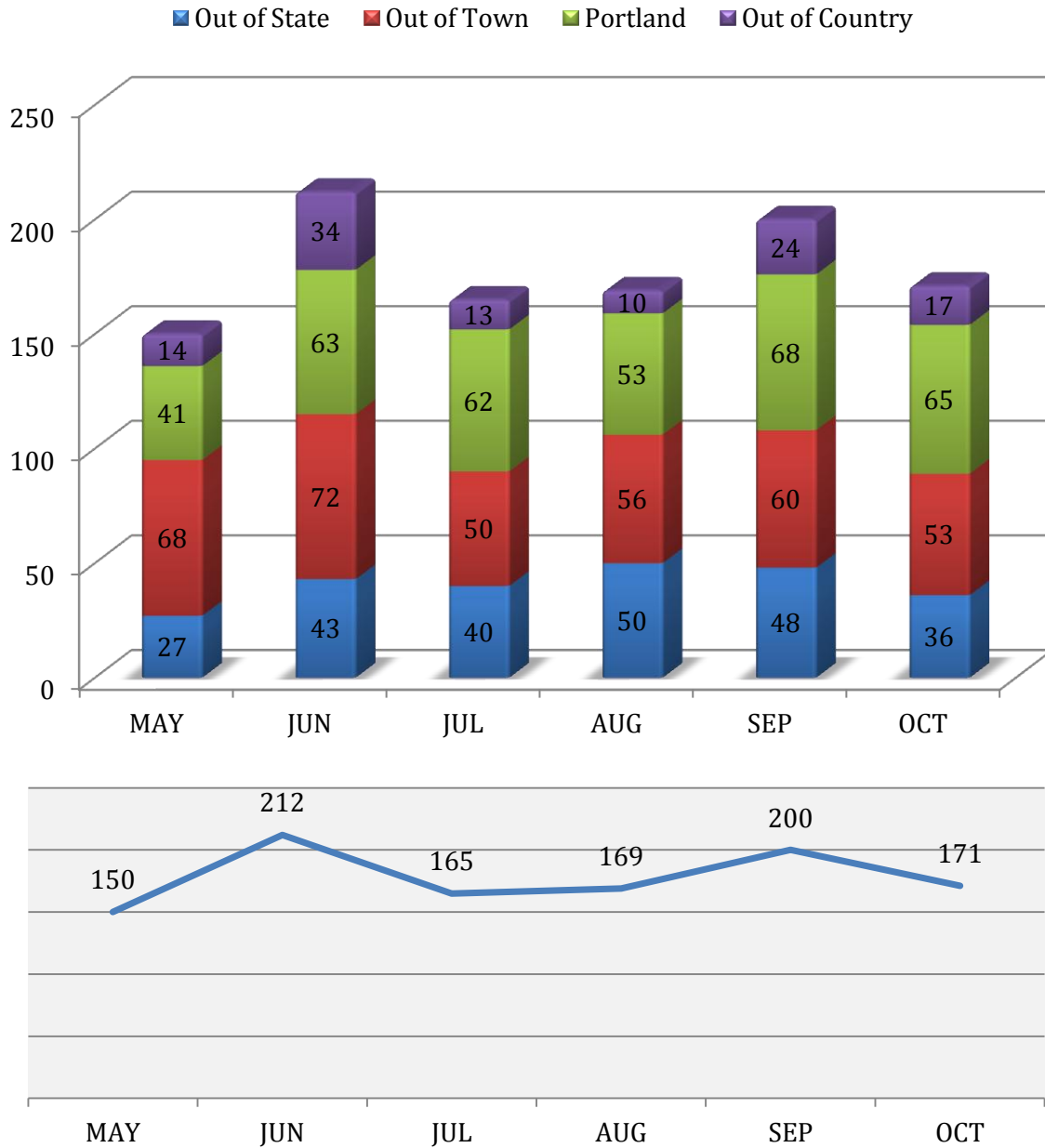
UNDUPLICATED INDIVIDUALS:	136
TOTAL NEW INTAKES:	46
TOTAL HOUSING PLACEMENTS:	8
• TH PLACEMENTS	0
• PH PLACEMENTS	8
TOTAL RETURNS:	0
*EXPERIENCING HOMELESSNESS FOR THE 1ST TIME	12
<small>(*BASED ON SELF-REPORTING)</small>	

FLORENCE HOUSE WOMEN'S SHELTER

UNDUPLICATED INDIVIDUALS:	43
TOTAL NEW INTAKES:	7
TOTAL HOUSING PLACEMENTS:	2
• TH PLACEMENTS	0
• PH PLACEMENTS	2
TOTAL RETURNS:	0
*EXPERIENCING HOMELESSNESS FOR THE 1ST TIME	2
<small>(*BASED ON SELF-REPORTING)</small>	

CITY OF PORTLAND
 HEALTH & HUMAN SERVICES DEPARTMENT
 SOCIAL SERVICES DIVISION

OXFORD STREET SHELTER
 OCTOBER 2014
 INTAKE STATISTICS



Intake statistic or new arrival is defined as an individual that has not stayed at the Shelter for a period of three (3) months/90-days or longer.

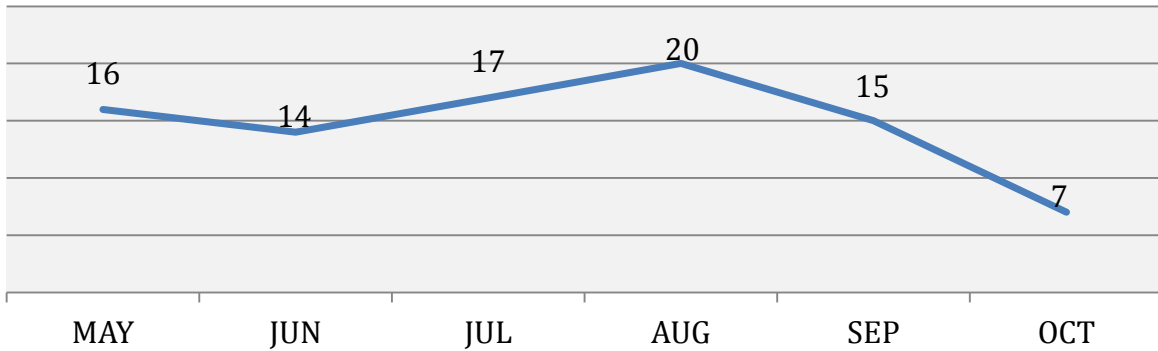
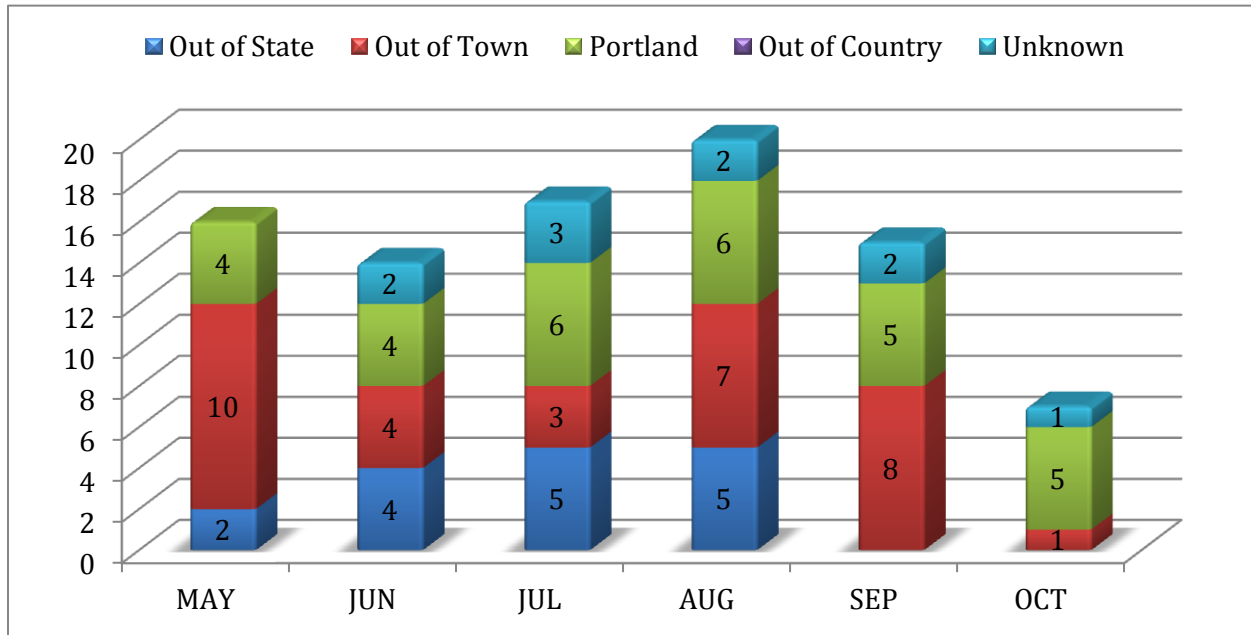
CITY OF PORTLAND
HEALTH & HUMAN SERVICES DEPARTMENT
SOCIAL SERVICES DIVISION

OXFORD STREET SHELTER
OCTOBER 2014

MAINE TOWN		OUT-OF-STATE		OUT-OF-COUNTRY	
Auburn	1	Alabama	2	Angola	2
Augusta	2	Arkansas	1	Burundi	4
Bangor	3	California	2	Congo	5
Biddeford	5	Colorado	2	Rwanda	4
Boothbay Harbor	1	Connecticut	1	Sudan	1
Brunswick	4	Florida	1	Uganda	1
Buxton	1	Idaho	1		
Casco	1	Indiana	1		
Cundys Harbor	1	Iowa	1		
East Baldwin	1	Maryland	2		
Ellsworth	1	Massachusetts	6		
Falmouth	1	Michigan	1		
Gorham	1	Missouri	1		
Gray	1	New Hampshire	8		
Highland Plantation	1	New York	1		
Indian Island	1	North Carolina	1		
Kennebunk	1	Ohio	1		
Levant	1	Tennessee	1		
Lewiston	2	Texas	1		
North Waterboro	1	Washington, DC	1		
Paris	1				
Rumford	1				
Saco	1				
Sanford	1				
Scarborough	2				
South Portland	8				
Springvale	2				
Standish	1				
Sullivan	1				
Waterville	1				
Westbrook	3				

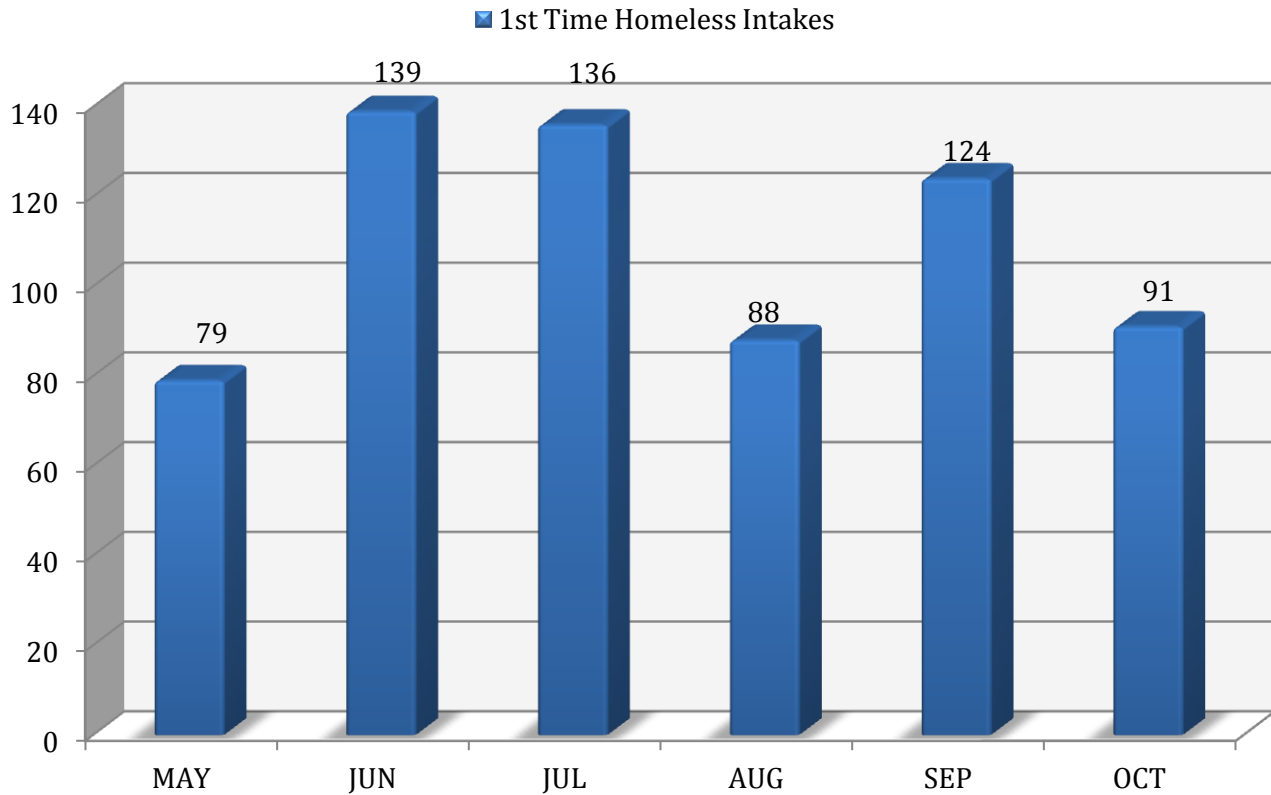
			Out-of-Country	17
Maine Towns	53	Out-of-State	36	Portland Intakes
				65
			TOTAL INTAKES	171

FLORENCE HOUSE WOMEN'S SHELTER OCTOBER 2014 INTAKE STATISTICS



MAINE TOWN		OUT-OF-STATE		OUT-OF-COUNTRY	
Standish	1				
				Out-of-Country	0
				Unknown	1
Maine Towns	1	Out-of-State	0	Portland Intakes	5
				<u>TOTAL INTAKES</u>	<u>7</u>

PORTLAND, CITY-WIDE
OCTOBER 2014
1st TIME HOMELESSNESS STATISTICS
(BASED ON SELF-REPORTING)



OCTOBER 2014
1ST TIME HOMELESSNESS STATISTICS % OF ALL INTAKES
(BASED ON SELF-REPORTING)

	1 st Time Homeless Intakes	% of Total First Time Homeless Intakes
Family Crisis	0	0%
Family Shelter	42	47%
Joe Kreisler	11	12%
Milestone	2	2%
Oxford Street (Men)	22	24%
Oxford Street (Women)	12	13%
Stepping Stones	0	0%
Women's Shelter	2	2%
TOTAL	91	

PORTLAND, CITY-WIDE
OCTOBER 2014
SHELTER COUNT BY NIGHT

Calendar Day	Family Crisis	Family Shelter + Hotel	Florence House	Joe Kreisler	Milestone	OSS-Beds	OSS-Chairs	Stepping Stones	Total Bed Nights
1	16	139	26	24	47	204	0	19	475
2	16	129	26	23	45	212	2	19	472
3	16	128	26	24	44	186	0	17	441
4	16	128	26	23	42	192	0	17	444
5	16	130	26	24	42	206	0	17	461
6	16	131	26	24	45	218	0	17	477
7	16	129	26	22	45	217	0	15	470
8	14	137	27	23	42	215	0	17	475
9	15	139	25	20	46	212	11	17	485
10	16	133	26	20	44	210	10	13	472
11	16	140	27	22	43	198	0	8	454
12	16	141	26	24	43	211	1	11	473
13	16	142	26	23	42	205	0	15	469
14	16	148	26	24	41	212	0	15	482
15	15	138	26	24	41	218	0	17	479
16	15	138	26	24	49	217	8	17	494
17	16	138	26	22	41	208	0	17	468
18	16	138	27	24	47	210	12	17	491
19	16	147	27	23	44	217	12	17	503
20	16	142	26	24	43	244	0	17	512
21	16	133	26	24	42	235	0	17	493
22	16	133	26	24	42	244	0	17	502
23	16	126	26	24	41	218	36	16	503
24	16	123	26	22	43	218	30	14	492
25	16	121	26	19	42	226	0	16	466
26	16	121	26	21	44	228	11	16	483
27	16	124	26	23	43	242	0	16	490
28	16	130	26	24	43	236	0	16	491
29	16	127	26	24	44	237	0	18	492
30	16	125	26	24	44	227	4	18	484
31	16	119	27	24	44	191	0	16	437
Total	491	4,117	810	714	1,348	6,714	137	499	14,830
Avg/night	16	133	26	23	43	217	4	16	478
Highest	16	148	27	24	49	244	36	19	512
Lowest	14	119	25	19	41	186	0	8	437

On October 20:
512 individuals
(including families)
were utilizing shelter services in Portland